

EAC0623

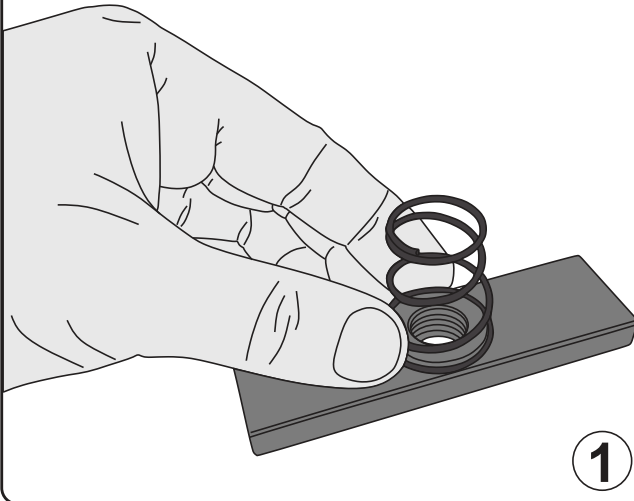
Kit Tiger Silence ST1 Pickup.

Contiene:

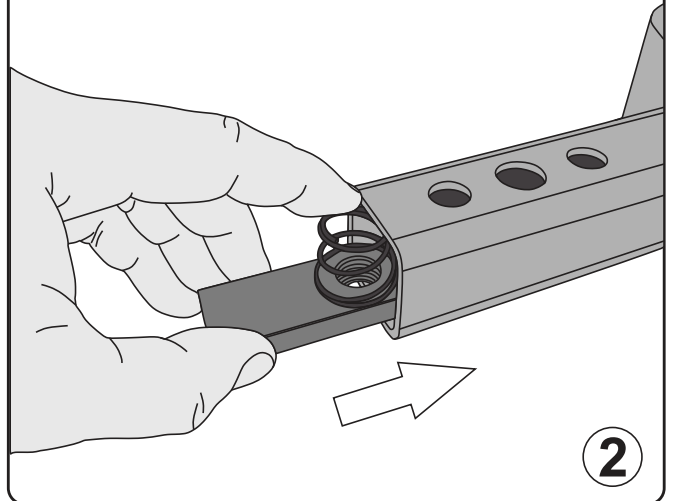
- 1 Tornillo.
- 1 Arandela.
- 1 Tuerca.
- 1 Resorte.
- 1 Placa base
- 1 Llave allen 10mm

INSTALACIÓN:

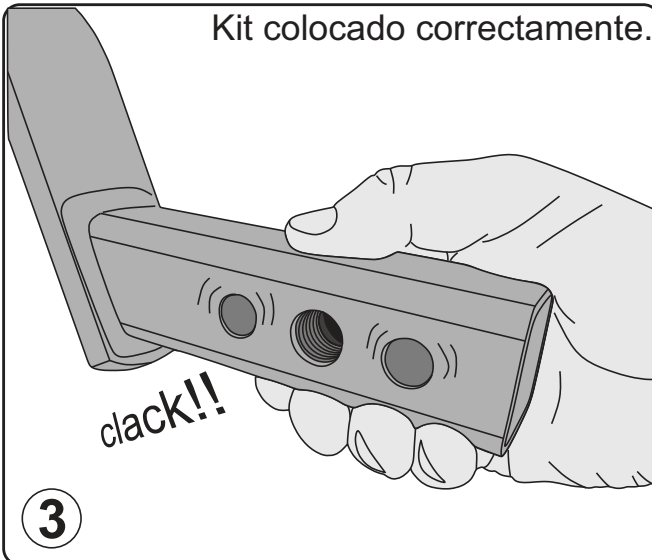
Encastrar el resorte en la placa base.



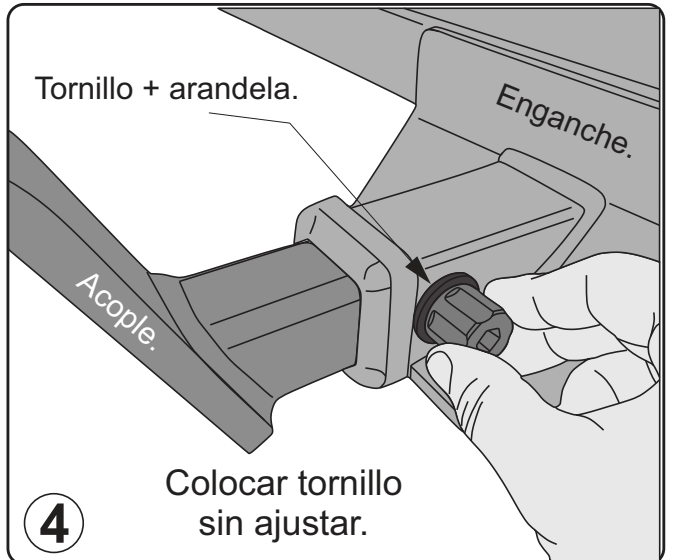
Introducir el conjunto dentro del acople.



Kit colocado correctamente.

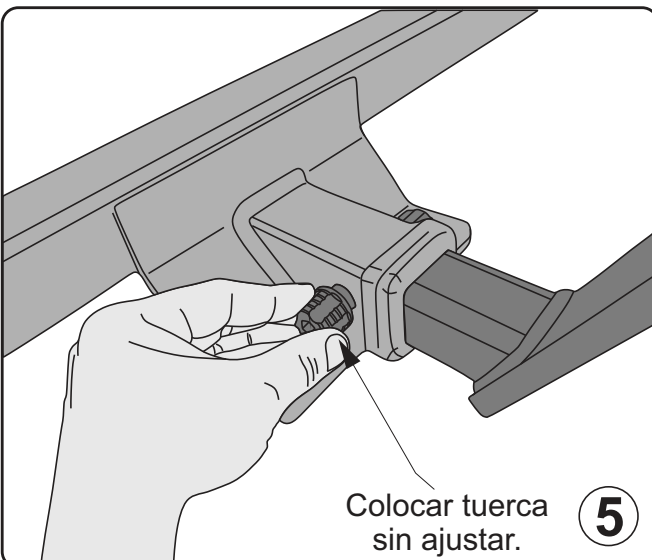


Tornillo + arandela.

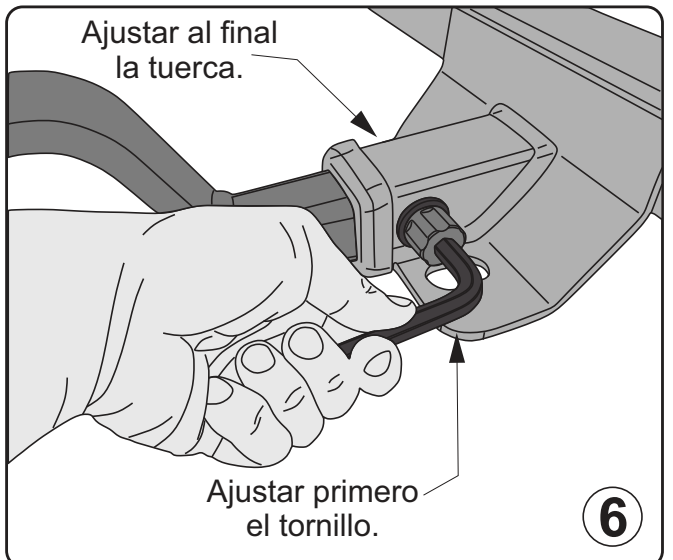


Colocar tornillo sin ajustar.

Ajustar al final la tuerca.



Colocar tuerca sin ajustar.



Ajustar primero el tornillo.